

# RADIANCE Series



## Enhance fans experience

With high performance sports stadium LED display

RADIANCE Series is the ideal solution for sports venues, stadiums, and outdoor advertising events. Designed to engage audiences with superior image quality and remarkable resilience, it boasts an impressive brightness of 10,000 nits, a large viewing angle, and an innovative mask and louver design. This ensures vibrant visuals that stand out even in bright sunlight, delivering superb clarity from every direction. The modular design simplifies installation, making setup a breeze. With an IP66 waterproof standard, it is built to withstand harsh conditions for extended performance. The RADIANCE Series is your perfect choice for outdoor LED displays.

# RADIANCE Series

## Features

### Modular Design

Facilitate easy and efficient maintenance

### Flexible Cabinet Configuration

Allow free combination making 90° seamless corner cabinet possible, bringing in lively 3D effects

### Energy Saving, Sustainable

Deploy dual DC output PSU to achieve lower power consumption and less heat dissipation which enhance display stability & extend its lifespan

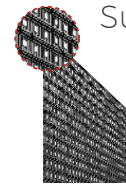


### IP66 Ingress Protection

Enhance durability and guarantee endurance of harsh conditions for extended performance

### Ultra-high Brightness, up to 10,000 nits

Allow precise image quality

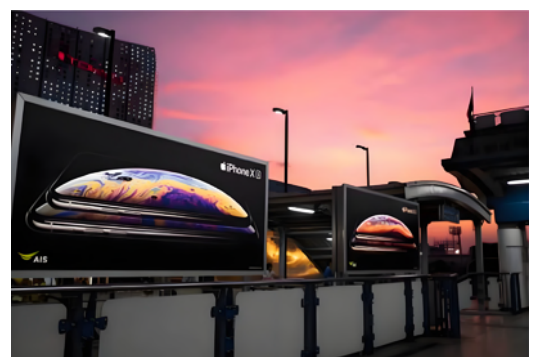


### Superior Mask and Louver Design

Ensure superb clarity even in bright sunlight

## Applications

- ⦿ Sports and events stadiums
- ⦿ Digital Out-of-Home advertising (DOOH)
- ⦿ Luxury retail chains
- ⦿ Facades display



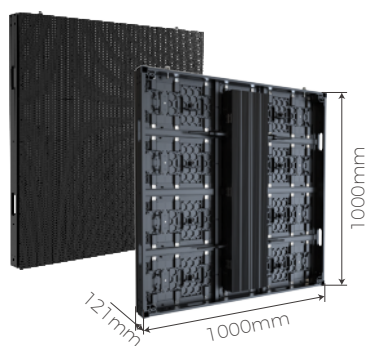
# RADIANCE Series

## General Information

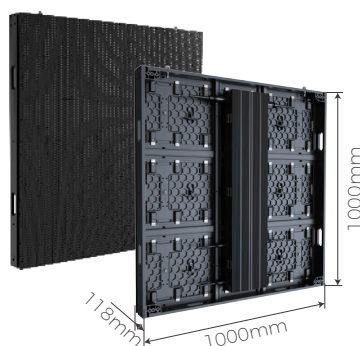
Items	R2.5	R4
Pixel Pitch	2.50 mm	3.91 mm
Pixel Density	160,000 dots/m <sup>2</sup>	65,536 dots/m <sup>2</sup>
Module Dimension (WxH)	240x270 mm	500x250 mm
Module Resolution	96x108	128x64
Cabinet Dimension (WxHxD)	480x540x70 mm	1,000x1,000x121 mm
Cabinet Resolution	192x216	256x256
Cabinet Weight	10 kg/pc	31 kg/pc
Cabinet Materials	Aluminium Profile	
Brightness	4,000 nits	7,000 nits (5,000 nits optional)
Refresh Rate	3,840 Hz	5,040 Hz
Gray Scale	16 bit	
Viewing Angle	H 140° / V 140°	H 160° / V 160°
Contrast Ratio	5,000:1	3,500:1 (8,000:1 optional)
Max. Power Consumption	600 W/m <sup>2</sup>	660 W/m <sup>2</sup>
Avg. Power Consumption	240 W/m <sup>2</sup>	232 W/m <sup>2</sup>

Items	R2.5 / R4 / R6 / R8 / R10
LED Type	SMD
Colour Temperature	6,500K
Ingress Protection	IP66
Maintenance	Front/Rear Access
Working Temperature	-20°C to +50°C
Storage Temperature	-40°C to +60°C
Storage Humidity	0-90% RH (No Condensation)
Input Voltage	AC 100-240V

Items	R6	R8	R10
Pixel Pitch	5.95 mm	8.33 mm	10.417 mm
Pixel Density	28,224 dots/m <sup>2</sup>	14,400 dots/m <sup>2</sup>	9,216 dots/m <sup>2</sup>
Module Dimension (WxH)	500x333.33 mm		
Module Resolution	84x56	60x40	48x32
Cabinet Dimension (WxHxD)	1,000x1,000x118 mm		
Cabinet Resolution	168x168	120x120	96x96
Cabinet Weight	29.5 kg/pc		
Cabinet Materials	Aluminium Profile		
Brightness	7,500 nits (10,000 nits optional)		
Refresh Rate	7,680 Hz		
Gray Scale	16 bit		
Viewing Angle	H 160° / V 115°	H 160° / V 120°	H 160° / V 130°
Contrast Ratio	4,500:1	6,000:1	8,000:1
Max. Power Consumption	680 W/m <sup>2</sup>		
Avg. Power Consumption	272 W/m <sup>2</sup>		



R4: 2x4 modules



R6 / R8 / R10: 2x3 modules



[nitxeon.com](http://nitxeon.com)



LinkedIn

Yaham Nitxeon Technologies HK Limited

Tel: +852-26289200

Web: [www.nitxeon.com](http://www.nitxeon.com)

Email: [sales@nitxeon.com](mailto:sales@nitxeon.com)

Address: Unit1712, Eight Commercial Tower, No. 8 Sun Yip Street, Siu Sai Wan, Hong Kong

© 2025 Yaham Nitxeon Technologies HK Limited

All rights reserved.

July 2025 - data subject to change

[www.nitxeon.com](http://www.nitxeon.com)



**NITXEON**  
TECHNOLOGIES